

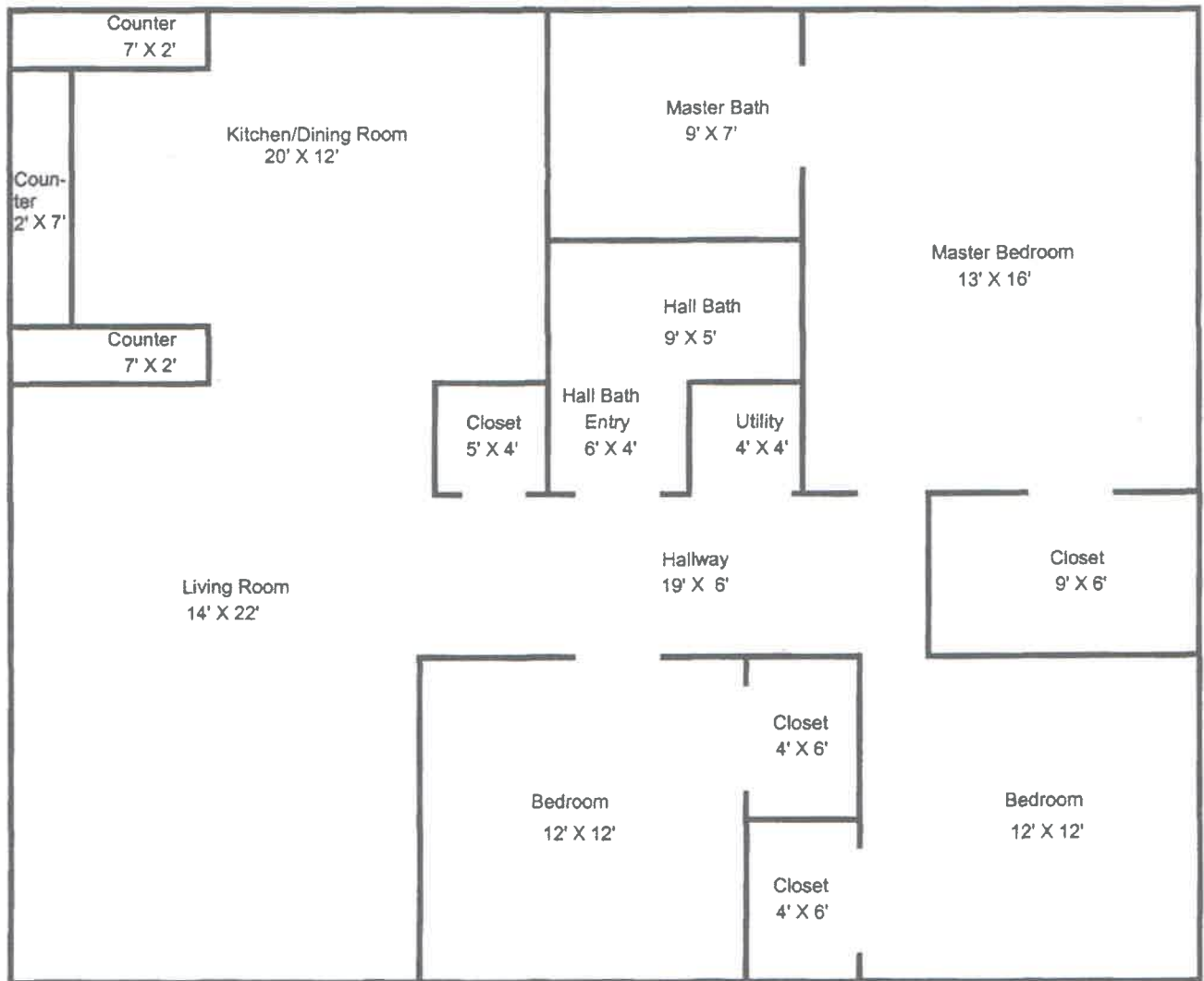
Carpet Laying and Tile Setting

Name: _____ Date: _____

ABE Level IV Math Assessment Task "Changing Spaces" in Your Home

This exercise will assess your ability to solve real-life math problems using basic mathematics operations for calculations of area, percents and conversions between U. S. standard units of measurement. You must show your work for each problem in the space provided.

Scenario: You have just purchased a home that needs interior remodeling. Your family decides to install new tile and carpet on the floors. A sketch of the floor plan is shown below. All measurements are in feet and represent the measurements rounded up to the nearest foot.



Answer Key

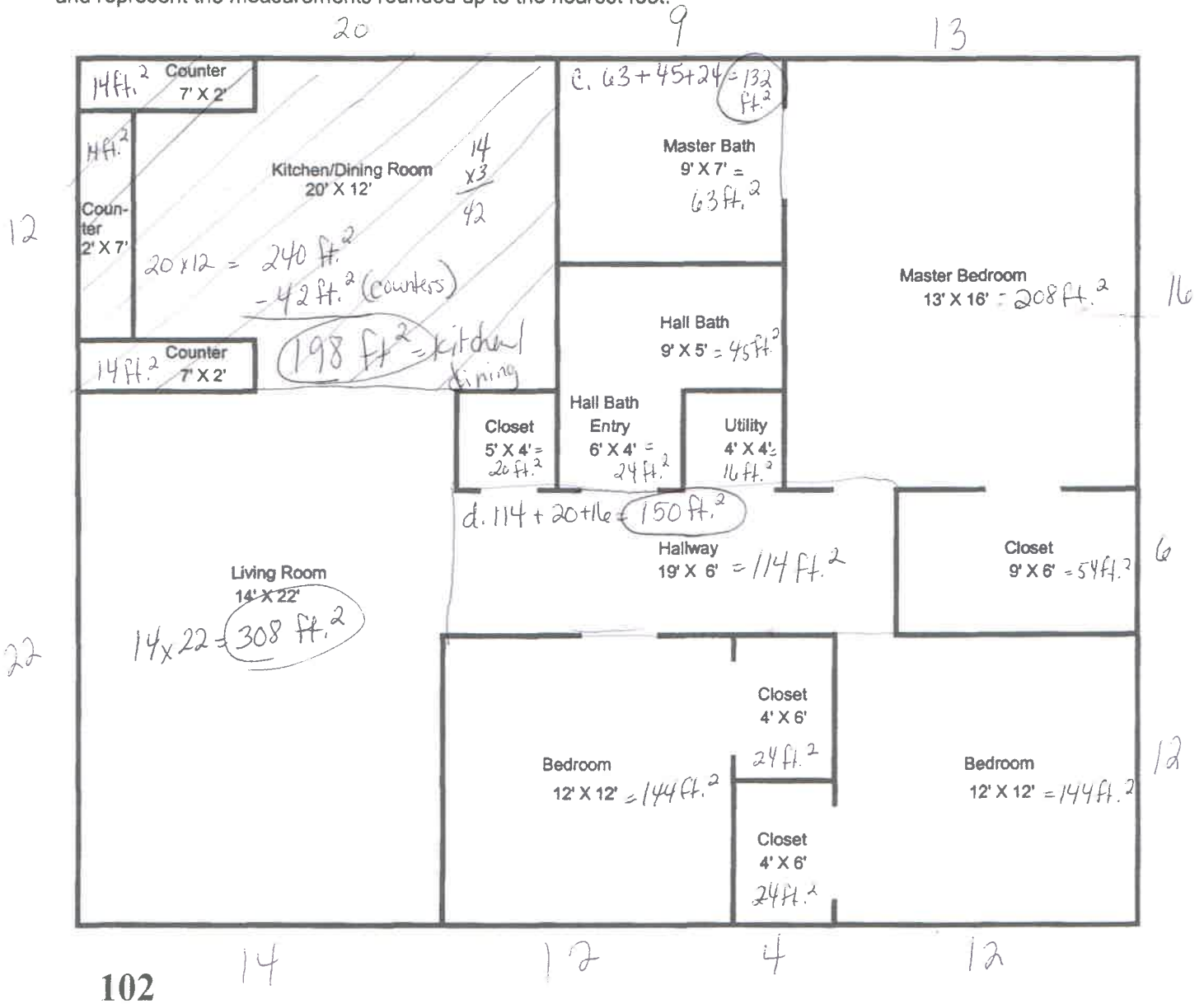
Carpet Laying and Tile Setting

Name: _____ Date: _____

ABE Level IV Math Assessment Task "Changing Spaces" in Your Home

This exercise will assess your ability to solve real-life math problems using basic mathematics operations for calculations of area, percents and conversions between U. S. standard units of measurement. You must show your work for each problem in the space provided.

Scenario: You have just purchased a home that needs interior remodeling. Your family decides to install new tile and carpet on the floors. A sketch of the floor plan is shown below. All measurements are in feet and represent the measurements rounded up to the nearest foot.



$20 + 9 + 13 = 14 + 4 + 12 + 12$
 $12 + 22 = 16 + 6 + 12$
 $42 \times 34 = 1,428 \text{ ft.}^2$